

American Classic Tours

Pittsburgh Youth Chamber Orchestra

Salzburg, Vienna & Prague
Performance Tour

July 16 - 24, 2012

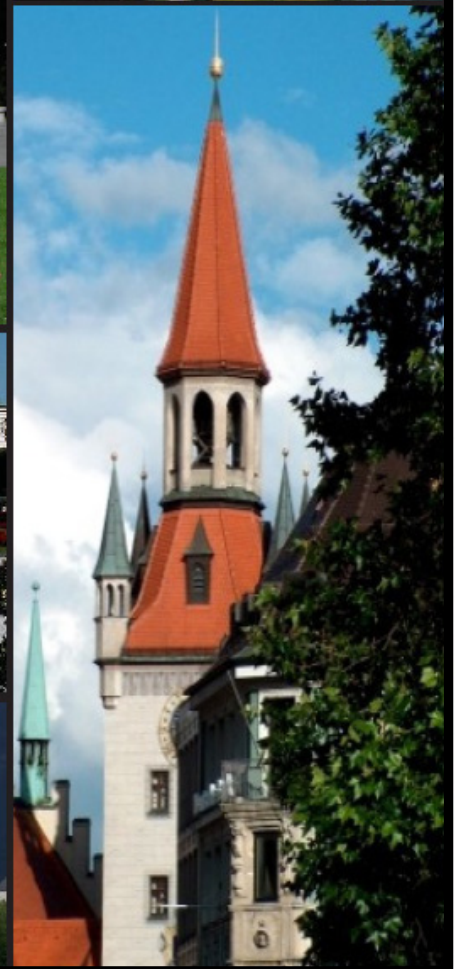
Pablo Ardiles, Director

Thomas Taylor

Pittsburgh Choral Ensemble, Director

Kimberly Wachter

PYCO, Orchestra Manager



 *Pittsburgh Youth Chamber Orchestra* 

“Excellence is our passion”

10203 Country Manor Lane • Wexford, PA 15090 • Tel: 412-630-9535 • www.pyco.org • info@pyco.org

To All Persons Interested In Joining The PYCO 2012 Performance European Tour:

The **Pittsburgh Youth Chamber Orchestra** (PYCO) is happy to extend an invitation to all persons interested in participating in the PYCO 2012 European Tour of **Salzburg, Vienna and Prague** to take place on **July 16 to 24, 2012**. PYCO has teamed up with the **Pittsburgh Choral Ensemble** (PCE) to present a magnificent blend of orchestra and choir concerts in each of these cities. The tour operator contracted by the Pittsburgh Youth Chamber Orchestra is **American Classic Tours & Music Festivals**.

In addition to the young musicians of PYCO and the adult singers of the Pittsburgh Choral Ensemble, we are extending this invitation to all persons interested in joining us on our 2012 European Tour either as a **Musician** or **Tour Guest**.

Participation as a Musician:

If you are a singer or instrumentalist, you are encouraged to join the **choir** or the **orchestra**. There are no age requirements. Whether you are a current member, a former student, orchestra alumnus, a member from another organization or a qualified young or adult instrumentalist or singer, you are welcome to participate in the group. For acceptance as a Musician, please contact the PYCO music director **Pablo Ardiles**; for the Pittsburgh Choral Ensemble, contact music director **Thomas Taylor**.

Participation as a Tour Guest:

Relatives and friends of the participating musicians, as well as any person wishing to accompany the orchestra and choir, are welcome to join the tour. With the exception of performing in the concerts, Tour Guests will participate in all the activities as described in the **Tour Itinerary** and **Tour Inclusions**. Tour Guests can choose their **own activities** if they wish, as long as it does not cause disruption of the tour schedule. For Tour Guests planning to join the orchestra in Europe there is also a **Land Package** available.

As with any educational activity, all adults involved with students will be required to present their **Act 33 & 34 clearances** to the Pittsburgh Youth Chamber Orchestra.

If you have any questions or concerns, please do not hesitate to contact PYCO music & executive director Pablo Ardiles at **412-630-8133** or the orchestra office at **412-630-9535**.

For information about joining the tour as a singer, contact Pittsburgh Choral Ensemble music director Thomas Taylor at **412-417-8283**.

For information about American Classic Tours & Music Festivals, please visit their website **www.amclass.com**.

To participate in the PYCO European Tour, please read the attached information for complete details, fill out the **Tour Contract** and **Trip Application Form** and return them to the orchestra by October 2, 2011 along with your **\$300.00 deposit** payable to PYCO to insure your spot. Participants are always welcome to join after the October 2, 2011 deposit deadline, based on availability of space. However, the cost of the tour will be adjusted to the rates at the time of joining. **Credit Card payments** are accepted through PayPal at our website www.pyco.org. A **3% non-refundable convenience fee will apply**.

We hope you will take advantage of this “once in a lifetime” opportunity of performing and visiting those places where music flourished and continues to thrive. We are looking forward to building many unique and inspirational experiences together that will produce lasting memories.

Best Regards,



Pablo Ardiles
Music & Executive Director
Pittsburgh Youth Chamber Orchestra



Pittsburgh Youth Chamber Orchestra

“Excellence is our passion”

Performance Tour of Salzburg, Vienna & Prague

July 16 - 24, 2012

TOUR INCLUSIONS

- ❖ Round-Trip Airfare from Pittsburgh to Munich, Germany - Returning from Prague
- ❖ Two (2) Nights Accommodation in a 3 Star or 3 Star+ Hotel in Salzburg, Austria
- ❖ Three (3) Nights Accommodation in a 3 Star or 3 Star+ Hotel in Vienna, Austria
- ❖ Two (2) Nights Accommodation in a 3 Star or 3 Star+ Hotel in Prague, Czech Republic
- ❖ Buffet Breakfasts at the Hotels Each Day
- ❖ Two (2) Dinners in Salzburg
- ❖ Two (2) Dinners in Vienna
- ❖ One Special Dinner at a “Heuriger Wine Restaurant” in Grinzing (Near Vienna)
- ❖ One Special Dinner in Prague at “U Marcanu” with a Folkloric Show and Music
- ❖ Guided City Tours of Salzburg, Vienna, and Prague with English Speaking Guides
- ❖ Entrances to:
 - Mozart’s Birthplace (Salzburg)
 - Haus der Musik (Interactive Museum of Music and Science – Vienna)
 - Schonbrunn Palace (Vienna)
 - Prague Castle and the Golden Lane
- ❖ 3 Performances to Be Arranged and Promoted by American Classic Tours
- ❖ All Guided Sightseeing Throughout by Luxury European Touring Coach with the Services of Bilingual Guides Throughout
- ❖ European Bilingual Tour Escort to meet the Group on Arrival in Munich with Motorcoach Drivers to Coordinate Luggage and Boarding of Coaches and Accompany Group throughout Tour
- ❖ Admissions to All Attractions on the Itinerary
- ❖ Departure Assistance from Tour Escort
- ❖ All European Airport, and Performance Transfers
- ❖ American Classic Tour Manager will Work Closely with the Director, Accompany the Group, Direct the Execution of All Logistics, and Handle Tickets and Logistics with the Airlines
- ❖ All Local Service Charges, Taxes, and Gratuities (Including for Tour Guides and Drivers)

• Based on **50 tour participants**, the estimated tour cost is **\$3,199.00 per person**. Based on **70 tour participants**, the estimated tour cost is **\$3,099.00 per person (price subject to revision if numbers of travelers decrease)**. Tour cost is based upon double occupancy (adults) and double/triple occupancy (Students). The **Land Package** is **\$1,766.00** per person without the air portion based on the current air estimate.

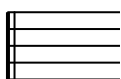
• An initial deposit of **\$300.00** will be required by **October 2, 2011** and the balance, due by **June 5, 2012**, may be paid in monthly installments. **Make checks payable to PYCO** and write “**PYCO 2012 Europe Trip**” in the memo line, and the name of the participant/s. Participants are always welcome to join after the October 2, 2011 deposit deadline, based on availability of space. However, the cost of the tour will be adjusted to the rates at the time of joining. **Credit Card payments are accepted** through PayPal at our website www.pyco.org. **A 3% non-refundable convenience fee will apply.**

• Fundraising events will be available to help offset tour expenses. Reasonably priced **Trip Insurance** is also available.

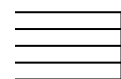
• A **Pre-Tour Meeting** and at least **Two Rehearsals** with the choir are mandatory. Four rehearsals are tentatively scheduled for **Sunday, June 24, 2012 - 6 to 9 PM; Sunday, July 8, 2012 - 6 to 9 PM; Saturday, July 14, 2012 - 6 to 9 PM** and **Sunday, July 15, 2012 - 6 to 9 PM**. The confirmation of the meeting and rehearsal schedules will be emailed to all tour participants well in advance.

This proposal is an estimate at the time of issuance. Final pricing can only be confirmed when you approve the proposal estimate and we are then able to actually contract with the airlines and ground operators. At this point no air space has been booked, nor have any of the other arrangements been confirmed. . The air and ground arrangements outlined in this letter are SUBJECT TO AVAILABILITY at the time of booking, and the rates are based on actual costs as of April 2011.

For more information, please contact PYCO Executive & Music Director Pablo Ardiles at 412-630-9535 or info@pyco.org



Pittsburgh Youth Chamber Orchestra



"Excellence is our passion"

Performance Tour of Salzburg, Vienna & Prague

July 16 - 24, 2012

TRAVEL ITINERARY

Day 1: Monday, July 16, 2012 • Pittsburgh

- Board your flight from the USA to Munich, Germany (overnight flight)

Day 2: Tuesday, July 17, 2012 • Munich – Salzburg

- Arrival at Munich Airport
- Meet your tour escort and the coach
- Transfer to Salzburg
- Dinner and overnight at the hotel in Salzburg

Day 3: Wednesday, July 18, 2012 • Salzburg

- Buffet breakfast.
- Coach at your disposal (please note that access to the city center by coach is limited).
- Meet with your English-speaking guide for a 3 hour city tour: the Mirabell Garden, the narrow Getreidegasse with its many shops, the Mozart Birthplace (with entrance), the Hohensalzburg Fortress overlooking the city.
- **PYCO & PCE Concert in the afternoon or evening**
- Dinner at hotel or in a typical local restaurant
- Overnight in Salzburg

Day 4: Thursday, July 19, 2012 • Salzburg - Vienna

- Breakfast buffet
- In the morning depart for Vienna
Options for the route without additional costs:
- Scenic drive through the Austrian Lake District "Salzkammergut"
- Stop at Mondsee and visit the "Wedding Church" a location of the movie "The Sound of Music"
- Dinner & Overnight at hotel in Vienna.

Day 5: Friday, July 20, 2012 • Vienna

- Buffet breakfast
- Half day city tour in Vienna with local guide including entry to Castle Schönbrunn
- **PYCO & PCE Afternoon Concert**, possibly at the Garden of Castle Schönbrunn
- Dinner in a typical Restaurant
- Overnight in Vienna.

Day 6: Saturday, July 21, 2012 • Vienna

- Buffet breakfast
- Visit the House of Music (interactive historical and scientific museum)
- The afternoon is free for shopping and exploration with assistance from your Tour Escort
- Dinner with wine (for adults) and live music at a typical HEURIGER at Grinzing
- Overnight in Vienna.

Day 7: Sunday, July 22, 2012 • Vienna - Prague

- Buffet breakfast
- Transfer to Prague
- City tour with English speaking local guide to include the Old Town, Prague Castle, Cathedral and the Golden Lane.
- **PYCO & PCE Evening Concert**, possibly at a church.
- Dinner on your own and overnight in Prague

Day 8: Monday, July 23, 2012 • Prague

- Buffet breakfast
- The remainder of the day is free to explore the old bridges, the shops and the artists who display their work in the public areas.
- This evening, enjoy a group farewell dinner and folklore show in the famous restaurant "U Marcanu" with live music, three course dinner. Enjoy unlimited soft drinks, water and coffee.
- Overnight in Prague

Day 9: Tuesday, July 24, 2012 • Prague

- Buffet breakfast
- Transfer to the airport for your journey back home

(Sign This Copy and Return to PYCO)

**Tour Contract
Pittsburgh Youth Chamber Orchestra
Salzburg, Vienna & Prague
July 16 - 24, 2012**

RESERVATIONS American Classic Tours, hereafter known as ACT, requires an initial deposit of **\$300 per person**, along with this signed agreement, to confirm this tour. Upon confirmation of the tour, we will move forward to secure reservations on behalf of your group. Based on **50 tour participants**, the estimated tour cost is **\$3,199.00 per person; 70 tour participants - \$3,099.00 per person (price subject to revision if numbers of travelers decrease).**

SCHEDULE of DEPOSITS

October 2, 2011	\$ 300.00 (initial deposit)	April 15, 2012	\$ 483.16
November 15, 2011	\$ 483.16	May 15, 2012	\$ 483.16
January 12, 2012	\$ 483.16	<u>June 5, 2012</u>	<u>\$ 483.20</u>
March 15, 2012	\$ 483.16	Total Payments	\$3,199.00 per person

Also due on June 5, 2012 will be any applicable hotel supplement charges for **single rooms**, any additional ground charges and any increases due to the currency exchange rate. **Make checks payable to PYCO** and write "PYCO 2012 Europe Trip" in the memo line, and the name of the participant/s. **Credit Card payments** are accepted through PayPal at our website www.pyco.org. **A 3% non-refundable convenience fee will apply.**

CANCELLATIONS.....It is agreed that cancellation fees represent compensation for liquidated damages to ACT and are not a penalty, and that if there are portions of the tour package not utilized by a tour member once the tour begins, such as meals, hotels, sightseeing or transportation, there will be no refunds. All cancellations must be made in writing, and fees will be assessed based upon date of receipt.

<u>Days Prior to Departure</u>	<u>Cancellation Fee</u>
November 15, 2011	\$100 per person plus any airline cancellation fees
180 days	\$175 per person plus any airline cancellation fees
150 days	10% of total tour package price
120 days	30% of total tour package price
90 days	50% of total tour package price
60 days	75% of total tour package price
45 days	100% of total tour package price

PASSPORTS AND VISAS....Passengers are responsible for ensuring that they have the proper travel documents. Passports are required for all international travel. U.S. Passport holders must verify whether a visa is required for this trip. Passengers from other countries **MUST CHECK** with the respective consulate/s or a visa agency to determine whether a visa is required.

TRANSPORTATION. Round-trip air and motor coach transportation will be provided by American Classic Tours. This includes all group activities currently listed in the tour proposal. **Transportation costs are subject to change in the event of higher fuel charges, tolls, taxes or itinerary changes. (Taxes and fuel surcharges are not guaranteed until the time of ticketing).**

RATES **Tour costs are based on fares and tariffs in effect as of April, 2011. All of these rates are subject to change in the event of any increase in costs and/or applicable tariffs prior to departure. Airport security taxes can vary and can cause an increase in the price of the tour as can fuel surcharges imposed by the airlines. Changes in number of travelers from the original projection will cause the tour cost to be revised to reflect the change. Changes in the value of the US Dollar vs. the Euro can also cause a revision to the price of the tour. Prices are not guaranteed until initial deposit is received and subsequent to deposit receipt are subject to the changes referenced in this agreement.**

LUGGAGE...All tour participants are allowed one piece of luggage per person and one carry-on item, for the purpose of fitting group luggage on the motorcoach. **All transportation charges for luggage imposed by the airline are at the expense of each individual. Excess or oversized luggage may be subject to additional charges by the airlines and will be payable by the individual tour member.**

This Agreement shall become effective upon execution by all parties. The Parties have duly executed this Agreement by their signature below:

Signature of Parent/Guardian or Traveler of Legal Age

Date

Pablo Ardiles

9/18/11

Pittsburgh Youth Chamber Orchestra Representative

Date

Rick Dillard

9/18/11

American Classic Tours Representative

Date

(Keep This Copy for Your Records)

**Tour Contract
Pittsburgh Youth Chamber Orchestra
Salzburg, Vienna & Prague
July 16 - 24, 2012**

RESERVATIONS American Classic Tours, hereafter known as ACT, requires an initial deposit of **\$300 per person**, along with this signed agreement, to confirm this tour. Upon confirmation of the tour, we will move forward to secure reservations on behalf of your group. Based on **50 tour participants**, the estimated tour cost is **\$3,199.00 per person; 70 tour participants - \$3,099.00 per person (price subject to revision if numbers of travelers decrease).**

SCHEDULE of DEPOSITS

October 2, 2011	\$ 300.00 (initial deposit)	April 15, 2012	\$ 483.16
November 15, 2011	\$ 483.16	May 15, 2012	\$ 483.16
January 12, 2012	\$ 483.16	<u>June 5, 2012</u>	<u>\$ 483.20</u>
March 15, 2012	\$ 483.16	Total Payments	\$3,199.00 per person

Also due on June 5, 2012 will be any applicable hotel supplement charges for **single rooms**, any additional ground charges and any increases due to the currency exchange rate. **Make checks payable to PYCO** and write "**PYCO 2012 Europe Trip**" in the memo line, and the name of the participant/s. **Credit Card payments** are accepted through PayPal at our website www.pyco.org. **A 3% non-refundable convenience fee will apply.**

CANCELLATIONS.....It is agreed that cancellation fees represent compensation for liquidated damages to ACT and are not a penalty, and that if there are portions of the tour package not utilized by a tour member once the tour begins, such as meals, hotels, sightseeing or transportation, there will be no refunds. All cancellations must be made in writing, and fees will be assessed based upon date of receipt.

<u>Days Prior to Departure</u>	<u>Cancellation Fee</u>
November 15, 2011	\$100 per person plus any airline cancellation fees
180 days	\$175 per person plus any airline cancellation fees
150 days	10% of total tour package price
120 days	30% of total tour package price
90 days	50% of total tour package price
60 days	75% of total tour package price
45 days	100% of total tour package price

PASSPORTS AND VISAS....Passengers are responsible for ensuring that they have the proper travel documents. Passports are required for all international travel. U.S. Passport holders must verify whether a visa is required for this trip. Passengers from other countries **MUST CHECK** with the respective consulate/s or a visa agency to determine whether a visa is required.

TRANSPORTATION. Round-trip air and motor coach transportation will be provided by American Classic Tours. This includes all group activities currently listed in the tour proposal. **Transportation costs are subject to change in the event of higher fuel charges, tolls, taxes or itinerary changes. (Taxes and fuel surcharges are not guaranteed until the time of ticketing).**

RATES **Tour costs are based on fares and tariffs in effect as of April, 2011. All of these rates are subject to change in the event of any increase in costs and/or applicable tariffs prior to departure. Airport security taxes can vary and can cause an increase in the price of the tour as can fuel surcharges imposed by the airlines. Changes in number of travelers from the original projection will cause the tour cost to be revised to reflect the change. Changes in the value of the US Dollar vs. the Euro can also cause a revision to the price of the tour. Prices are not guaranteed until initial deposit is received and subsequent to deposit receipt are subject to the changes referenced in this agreement.**

LUGGAGE...All tour participants are allowed one piece of luggage per person and one carry-on item, for the purpose of fitting group luggage on the motorcoach. **All transportation charges for luggage imposed by the airline are at the expense of each individual. Excess or oversized luggage may be subject to additional charges by the airlines and will be payable by the individual tour member.**

This Agreement shall become effective upon execution by all parties. The Parties have duly executed this Agreement by their signature below:

Signature of Parent/Guardian or Traveler of Legal Age

Date

Pablo Andiles

9/18/11

Pittsburgh Youth Chamber Orchestra Representative

Date

Rick Dillard

9/18/11

American Classic Tours Representative

Date

(Sign This Copy and Return to PYCO)

Tour Contract – GROUND SERVICES ONLY
Pittsburgh Youth Chamber Orchestra
Salzburg, Vienna & Prague
July 16 - 24, 2012

RESERVATIONS American Classic Tours, hereafter known as ACT, requires an initial deposit of **\$300 per person**, along with this signed agreement, to confirm this tour. Upon confirmation of the tour, we will move forward to secure reservations on behalf of your group. Based on **50 tour participants**, the estimated tour cost is **\$1,766.00 per person for the Ground Only Package (price subject to revision if numbers of travelers decrease)**.

SCHEDULE of DEPOSITS

October 2, 2011	\$ 300.00 (initial deposit)	April 15, 2012	\$ 244.33
November 15, 2011	\$ 244.33	May 15, 2012	\$ 244.34
January 12, 2012	\$ 244.33	<u>June 5, 2012</u>	<u>\$ 244.34</u>
March 15, 2012	\$ 244.33	Total Payments	\$ 1,766.00 per person

Also due on June 5, 2012 will be any applicable hotel supplement charges for **single rooms**, any additional ground charges and any increases due to the currency exchange rate. **Make checks payable to PYCO** and write “**PYCO 2012 Europe Trip**” in the memo line, and the name of the participant/s. **Credit Card payments** are accepted through PayPal at our website www.pyco.org. **A 3% non-refundable convenience fee will apply.**

CANCELLATIONS.....It is agreed that cancellation fees represent compensation for liquidated damages to ACT and are not a penalty, and that if there are portions of the tour package not utilized by a tour member once the tour begins, such as meals, hotels, sightseeing or transportation, there will be no refunds. All cancellations must be made in writing, and fees will be assessed based upon date of receipt.

<u>Days Prior to Departure</u>	<u>Cancellation Fee</u>
November 15, 2011	\$100 per person plus any airline cancellation fees
180 days	\$175 per person plus any airline cancellation fees
150 days	10% of total tour package price
120 days	30% of total tour package price
90 days	50% of total tour package price
60 days	75% of total tour package price
45 days	100% of total tour package price

PASSPORTS AND VISAS....Passengers are responsible for ensuring that they have the proper travel documents. Passports are required for all international travel. U.S. Passport holders must verify whether a visa is required for this trip. Passengers from other countries **MUST CHECK** with the respective consulate/s or a visa agency to determine whether a visa is required.

TRANSPORTATION. Round-trip air and motor coach transportation will be provided by American Classic Tours. This includes all group activities currently listed in the tour proposal. **Transportation costs are subject to change in the event of higher fuel charges, tolls, taxes or itinerary changes. (Taxes and fuel surcharges are not guaranteed until the time of ticketing).**

RATES Tour costs are based on fares and tariffs in effect as of April, 2011. All of these rates are subject to change in the event of any increase in costs and/or applicable tariffs prior to departure. Airport security taxes can vary and can cause an increase in the price of the tour as can fuel surcharges imposed by the airlines. Changes in number of travelers from the original projection will cause the tour cost to be revised to reflect the change. Changes in the value of the US Dollar vs. the Euro can also cause a revision to the price of the tour. Prices are not guaranteed until initial deposit is received and subsequent to deposit receipt are subject to the changes referenced in this agreement.

LUGGAGE...All tour participants are allowed one piece of luggage per person and one carry-on item, for the purpose of fitting group luggage on the motorcoach. **All transportation charges for luggage imposed by the airline are at the expense of each individual. Excess or oversized luggage may be subject to additional charges by the airlines and will be payable by the individual tour member.**

This Agreement shall become effective upon execution by all parties. The Parties have duly executed this Agreement by their signature below:

Signature of Parent/Guardian or Traveler of Legal Age

Date

Pablo Andiles

9/18/11

Pittsburgh Youth Chamber Orchestra Representative

Date

Rick Dillard

9/18/11

American Classic Tours Representative

Date

(Keep this Copy for your Records)

**Tour Contract – GROUND SERVICES ONLY
Pittsburgh Youth Chamber Orchestra
Salzburg, Vienna & Prague
July 16 - 24, 2012**

RESERVATIONS American Classic Tours, hereafter known as ACT, requires an initial deposit of **\$300 per person**, along with this signed agreement, to confirm this tour. Upon confirmation of the tour, we will move forward to secure reservations on behalf of your group. Based on **50 tour participants**, the estimated tour cost is **\$1,766.00 per person for the Ground Only Package (price subject to revision if numbers of travelers decrease)**.

SCHEDULE of DEPOSITS

October 2, 2011	\$ 300.00 (initial deposit)	April 15, 2012	\$ 244.33
November 15, 2011	\$ 244.33	May 15, 2012	\$ 244.34
January 12, 2012	\$ 244.33	<u>June 5, 2012</u>	<u>\$ 244.34</u>
March 15, 2012	\$ 244.33	Total Payments	\$ 1,766.00 per person

Also due on June 5, 2012 will be any applicable hotel supplement charges for **single rooms**, any additional ground charges and any increases due to the currency exchange rate. **Make checks payable to PYCO** and write "**PYCO 2012 Europe Trip**" in the memo line, and the name of the participant/s. **Credit Card payments** are accepted through PayPal at our website www.pyco.org. **A 3% non-refundable convenience fee will apply.**

CANCELLATIONS.....It is agreed that cancellation fees represent compensation for liquidated damages to ACT and are not a penalty, and that if there are portions of the tour package not utilized by a tour member once the tour begins, such as meals, hotels, sightseeing or transportation, there will be no refunds. All cancellations must be made in writing, and fees will be assessed based upon date of receipt.

<u>Days Prior to Departure</u>	<u>Cancellation Fee</u>
November 15, 2011	\$100 per person plus any airline cancellation fees
180 days	\$175 per person plus any airline cancellation fees
150 days	10% of total tour package price
120 days	30% of total tour package price
90 days	50% of total tour package price
60 days	75% of total tour package price
45 days	100% of total tour package price

PASSPORTS AND VISAS....Passengers are responsible for ensuring that they have the proper travel documents. Passports are required for all international travel. U.S. Passport holders must verify whether a visa is required for this trip. Passengers from other countries **MUST CHECK** with the respective consulate/s or a visa agency to determine whether a visa is required.

TRANSPORTATION. Round-trip air and motor coach transportation will be provided by American Classic Tours. This includes all group activities currently listed in the tour proposal. **Transportation costs are subject to change in the event of higher fuel charges, tolls, taxes or itinerary changes. (Taxes and fuel surcharges are not guaranteed until the time of ticketing).**

RATES Tour costs are based on fares and tariffs in effect as of April, 2011. All of these rates are subject to change in the event of any increase in costs and/or applicable tariffs prior to departure. Airport security taxes can vary and can cause an increase in the price of the tour as can fuel surcharges imposed by the airlines. Changes in number of travelers from the original projection will cause the tour cost to be revised to reflect the change. Changes in the value of the US Dollar vs. the Euro can also cause a revision to the price of the tour. Prices are not guaranteed until initial deposit is received and subsequent to deposit receipt are subject to the changes referenced in this agreement.

LUGGAGE...All tour participants are allowed one piece of luggage per person and one carry-on item, for the purpose of fitting group luggage on the motorcoach. **All transportation charges for luggage imposed by the airline are at the expense of each individual. Excess or oversized luggage may be subject to additional charges by the airlines and will be payable by the individual tour member.**

This Agreement shall become effective upon execution by all parties. The Parties have duly executed this Agreement by their signature below:

Signature of Parent/Guardian or Traveler of Legal Age

Date

Pablo Andiles

9/18/11

Pittsburgh Youth Chamber Orchestra Representative

Date

Rick Dillard

9/18/11

American Classic Tours Representative

Date

(Sign This Copy and Return to PYCO)

TRIP APPLICATION FORM
AMERICAN CLASSIC TOURS & MUSIC FESTIVALS

School/Group & Trip Sponsor Pittsburgh Youth Chamber Orchestra (PYCO)

Trip Name & Dates PYCO 2012 European Tour. July 16 to 24, 2012

Participant's Name _____

Address _____

Phone & Email _____

Father/Guardian's Name _____

Address _____

Emergency Phone & Email _____

Mother/ Guardian's Name _____

Address _____

Emergency Phone & Email _____

Health Information

Medical Insurance Company: _____ Phone _____

Policy Number: _____

Family Doctor: _____ Phone _____

We agree that the Participant can receive non-prescription medicine during the trip if the need arises.

We agree that in the event of an emergency the trip leaders may authorize emergency medical treatment for the Participant if a parent or guardian can not be reached.

The Participant is in good health, does not take medications, and has no special medical conditions.

List exceptions here. Attach a separate sheet if more space is necessary.

Travel Insurance: The Participant **Accepts** / **Declines** to purchase travel insurance. (circle one)

Trip Cost, Payments, Cancellations, & Refunds: Each Participant shall pay the Trip Sponsor the amount it requires to enroll in the trip. The Trip Sponsor will specify the payment schedule and the terms on which it will give a refund in the event of cancellation.

We have read, fully understand and agree with the terms of this Application and the Consumer Disclosure Notice and Code of Conduct printed in the back of this form. We agree not to hold any trip leader or chaperone on this trip responsible for any accident, error or omission.

Participant's Signature: _____

Father/Guardian's Signature: _____

Mother/Guardian's Signature: _____

Date: _____

(Keep This Copy for Your Records)

TRIP APPLICATION FORM
AMERICAN CLASSIC TOURS & MUSIC FESTIVALS

School/Group & Trip Sponsor Pittsburgh Youth Chamber Orchestra (PYCO)

Trip Name & Dates PYCO 2012 European Tour. July 16 to 24, 2012

Participant's Name _____

Address _____

Phone & Email _____

Father/Guardian's Name _____

Address _____

Emergency Phone & Email _____

Mother/ Guardian's Name _____

Address _____

Emergency Phone & Email _____

Health Information

Medical Insurance Company: _____ Phone _____

Policy Number: _____

Family Doctor: _____ Phone _____

We agree that the Participant can receive non-prescription medicine during the trip if the need arises.

We agree that in the event of an emergency the trip leaders may authorize emergency medical treatment for the Participant if a parent or guardian can not be reached.

The Participant is in good health, does not take medications, and has no special medical conditions.

List exceptions here. Attach a separate sheet if more space is necessary.

Travel Insurance: The Participant **Accepts** / **Declines** to purchase travel insurance. (circle one)

Trip Cost, Payments, Cancellations, & Refunds: Each Participant shall pay the Trip Sponsor the amount it requires to enroll in the trip. The Trip Sponsor will specify the payment schedule and the terms on which it will give a refund in the event of cancellation.

We have read, fully understand and agree with the terms of this Application and the Consumer Disclosure Notice and Code of Conduct printed in the back of this form. We agree not to hold any trip leader or chaperone on this trip responsible for any accident, error or omission.

Participant's Signature: _____

Father/Guardian's Signature: _____

Mother/Guardian's Signature: _____

Date: _____

This page should be printed in the back of the TRIP APPLICATION FORM that you sign and return to PYCO, as well as in the TRIP APPLICATION FORM that you keep for your records

CONSUMER DISCLOSURE NOTICE: Please read this carefully, as your signing the Application and/or deposit payment on a trip signifies acceptance of these terms & conditions. The trip is arranged by American Classic Tours & Music Festivals (hereinafter "ACT"). It has made the travel arrangements at the direction of the School/Group and acts as agent for the transportation carriers & other suppliers (SUPS) of services connected with the tour, all of which are independent contractors.

ACT in no way owns or operates the vehicles or facilities to be used during the trip, & does not guarantee performance by, or assume responsibility for the acts &/or omissions of SUPS, their employees, agents, etc. All bookings are accepted subject to the conditions imposed by SUPS & ACT, including, but not limited to, the airline, cruise line, rail, coach, hotel, restaurants, insurance & other companies, firms or persons concerned with the trip. ACT shall not be responsible for, and shall make no refund for, events beyond its control, such as, without limitation, acts of God, strikes, acts of war, terrorism or civil disturbance, government restrictions, or for acts or omission of persons or companies not controlled by ACT, such as, without limitation air carriers, bus companies, railways and hotels, or for elements of the package not used by customer. ACT and its officers, employees, and agents are hereby released from all claims arising out of such events, acts, or omissions. If there is a difference between ACT conditions and those published by a SUP, the conditions of SUP shall apply.

The participant and his/her parent/guardian accept responsibility for all property or monetary damages caused by the participant to the hotels, Bus Company, or other property. The participant and his/her parent/guardian assume all risks of personal injury which may be suffered, incurred or caused during the trip and hereby release ACT and its officers, employees and agents from all claims arising out of loss or injury. Price quoted is per person quad occupancy, unless noted otherwise, and the price is subject to adjustment if the number of participants varies significantly from the estimated number. ACT reserves the right to cancel a trip, change the itinerary or adjust rates whenever in its sole judgment conditions warrant, or if ACT deems it necessary for your comfort, convenience or safety. ACT reserves the right to correct an error in the advertised price prior to your departure. Trips outside the USA require a valid U.S. passport or other acceptable forms of citizenship proof. You are responsible for, & release ACT from passport, visa, vaccination requirements & safety conditions in travel destinations.

ACT strongly recommends you purchase travel/medical/baggage insurance for the trip, which is available through ACT. For medical info, call Public Health at 301-443-2403, & for travel advisories State Dept. at 202-647-5225. ACT requires that medical release forms with a health care proxy be received in our office for each participant no later than 30 days prior to scheduled trip. A contract is made when your reservation & payment are accepted by ACT in its home office in San Antonio, Texas & any disputes shall be governed by Texas law & are subject to exclusive jurisdiction and venue in Bexar County, Texas. In calculating the cost of your trip, ACT has relied on your consent to these terms & in the absence of this release, the trip cost would have been higher.

CODE OF CONDUCT: All tour members shall observe reasonable rules of safety and conduct as directed by the trip leader, aided by teacher(s), chaperones and the tour escort, who has absolute authority to expel any tour participant whose actions or behavior are considered detrimental to the group's welfare. The trip leader, teacher(s), ACT and its employees and agents are released from any liability to any expelled participant for such expulsion and no refunds shall be made.